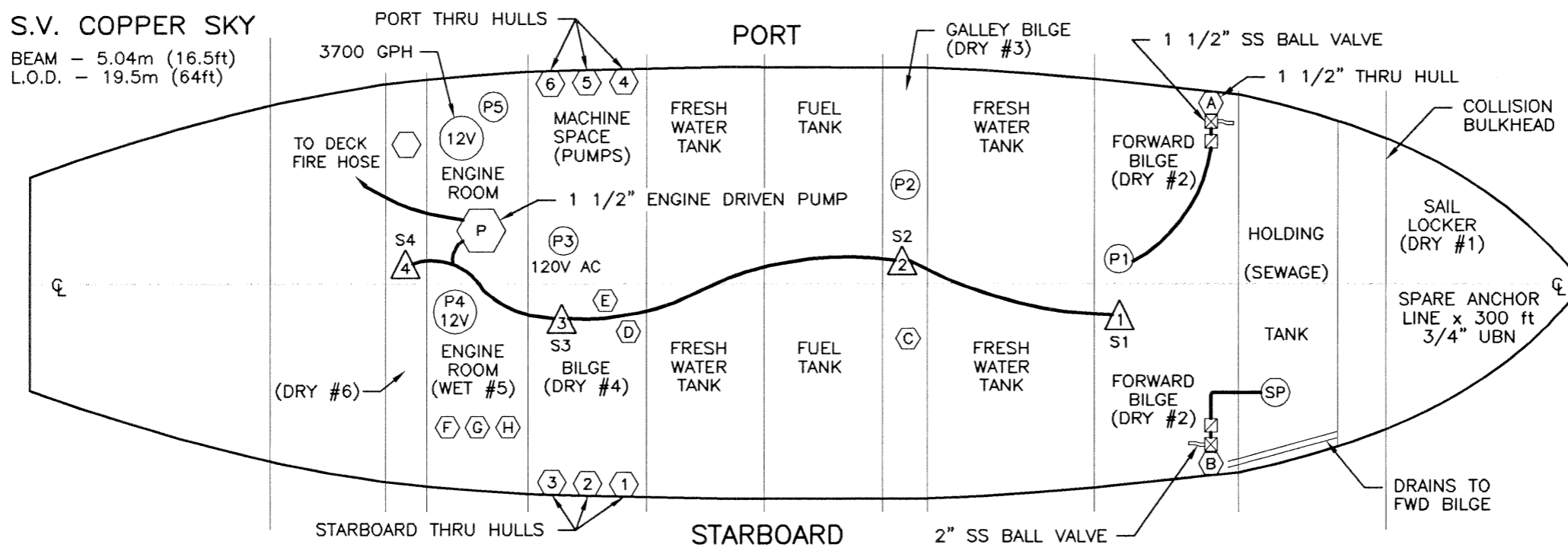


S.V. COPPER SKY

BEAM - 5.04m (16.5ft)
L.O.D. - 19.5m (64ft)



NOTES:

THERE ARE SIX BILGE COMPARTMENTS FIVE ARE NORMALLY DRY AND ONE IS WET (ENGINE ROOM)

BILGE #1(DRY) IS ABAFT THE COLLISION BULKHEAD, IS DRY, IS USED FOR STOWING STORM TACKLE (1/2" CHAIN BRIDGE) AND DRAINS AFT TO ENGINE DRIVEN PUMP.

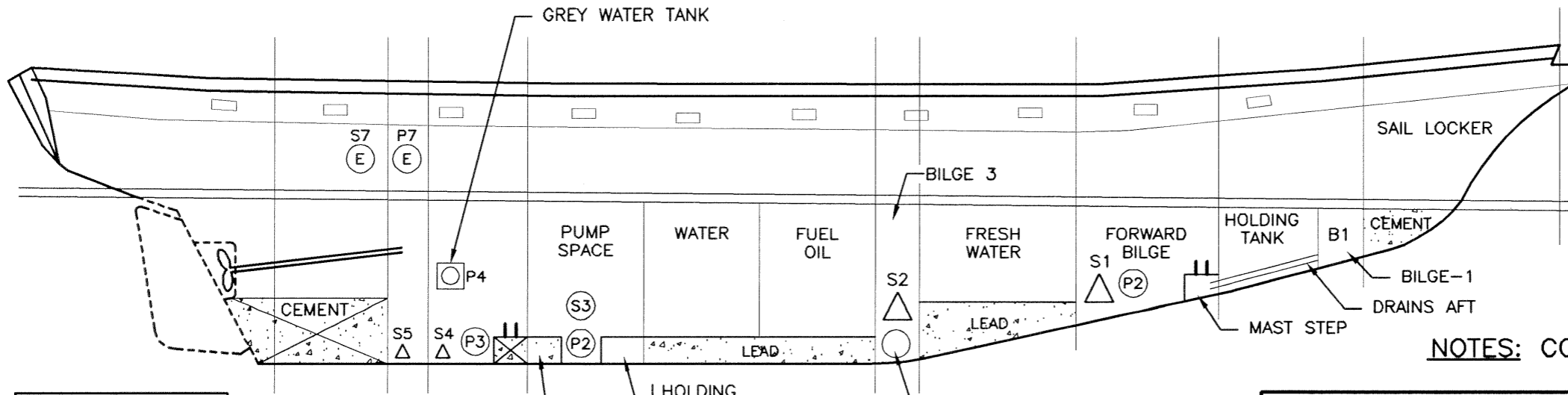
BILGE #2(DRY) IS ABAFT THE COLLISION BULKHEAD AND IS DRY. WORKING BILGE PUMP IS 12V 3500 GPH - BACKUP IS S1.

BILGE #3(DRY) IS GALLEY BILGE: ACCESS TO FRESH WATER TANKS, FUEL FILLS AND FRESH WATER PRESSURE SYSTEM #1: 120V AC PORTABLE PUMP AND S2.

BILGE #4(DRY) IS PUMP SPACE ABAFT FUEL AND WATER TANKS: FRESH AND SALT WATER PRESSURE SYSTEMS, FUEL SUCTION, FILTERS AND TRANSFER PUMP FITTED WITH 120V AC PUMP AND S3.

BILGE #5(WET) ENGINE ROOM SHAFT GLAND IS SOURCE OF WATER: PUMPS - 1 12V 3500 GPH IN BILGE (MANUALLY SWITCHED) AND 1 3500 GPH 12V IN GRAY TANK (AUTO) AND S5.

BILGE #6(DRY) IS USED FOR SPARE OIL.



NOTES: CONTINUED ON SHEET 2

- SUCTION PUMP
- SS BALL VALVE
- CHECK VALVE
- THRU HULL
- BILGE PUMP

LEGEND

PLAN VIEW

NTS

NAN-C-NAV/CAD Services (604) 584-9115	
BILGE SYSTEMS	
APR 2004	S.V. COPPER SKY
O.N. 805624	FILE: COPSKY-11