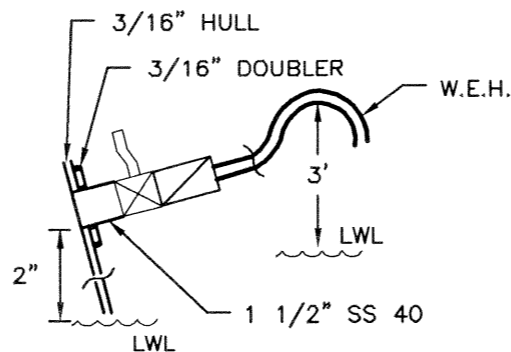
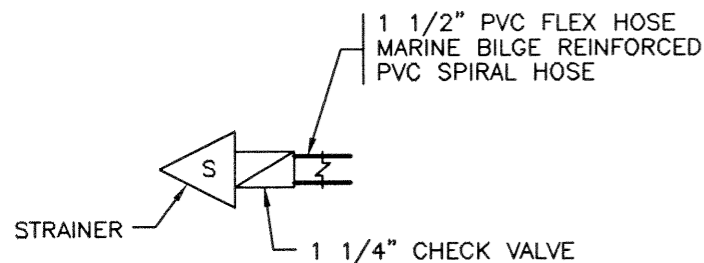


THRU HULL INTAKES ARE
1 1/2" SCHED 40 STAINLESS.
(C) ENGINE DRIVEN BILGE AND
FIRE PUMP.

NOTES:

1. STAINLESS BALL VALVE
2. BRONZE OR PVC CHECK VALVE
3. FOOT STRAINER
4. W.E.H. WET EXHAUST HOSE
5. PVCH PVE REINFORCED SPIRAL BILGE HOSE
6. PVCP PVC SCHED 40 PIPE
7. GS40 GALVANIZED SCHED 40 PIPE
8. SS40 STAINLESS STEEL SCHED 40



| | |
|---------------------------------------|-------------------|
| NAN-C-NAV/CAD Services (604) 584-9115 | |
| BILGE SYSTEM DETAILS | |
| APR 2004 | S.V. COPPER SKY |
| O.N. 805624 | FILE: COPSKY-12-2 |