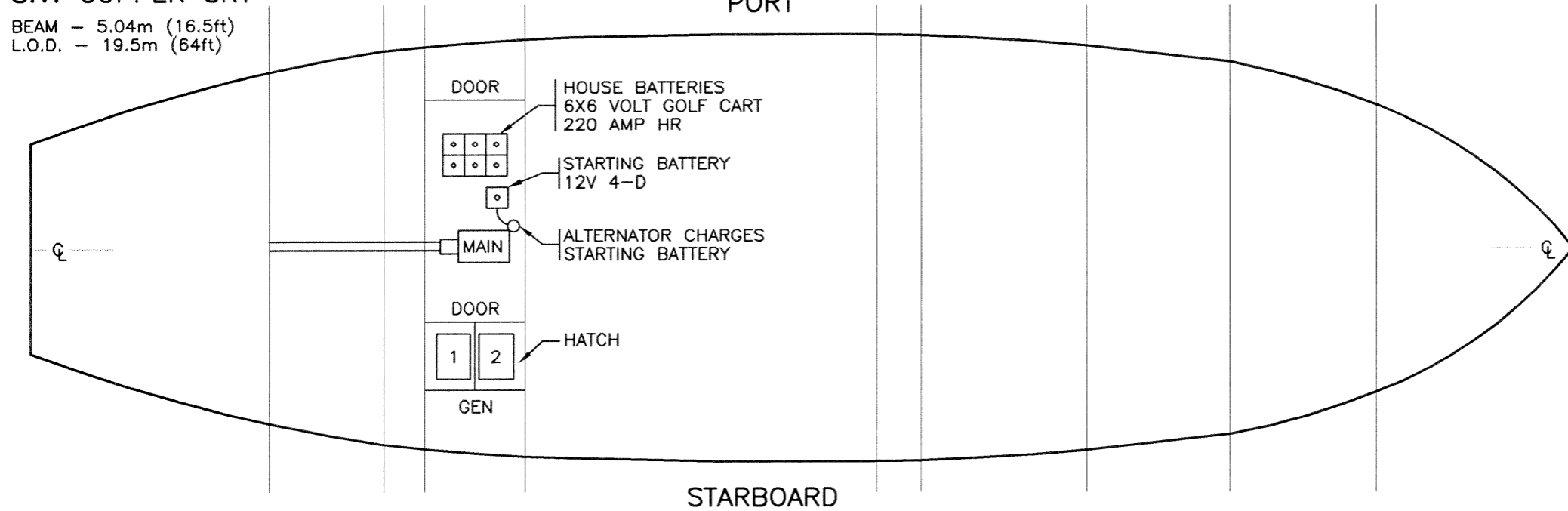


S.V. COPPER SKY

BEAM - 5.04m (16.5ft)  
L.O.D. - 19.5m (64ft)

PORT

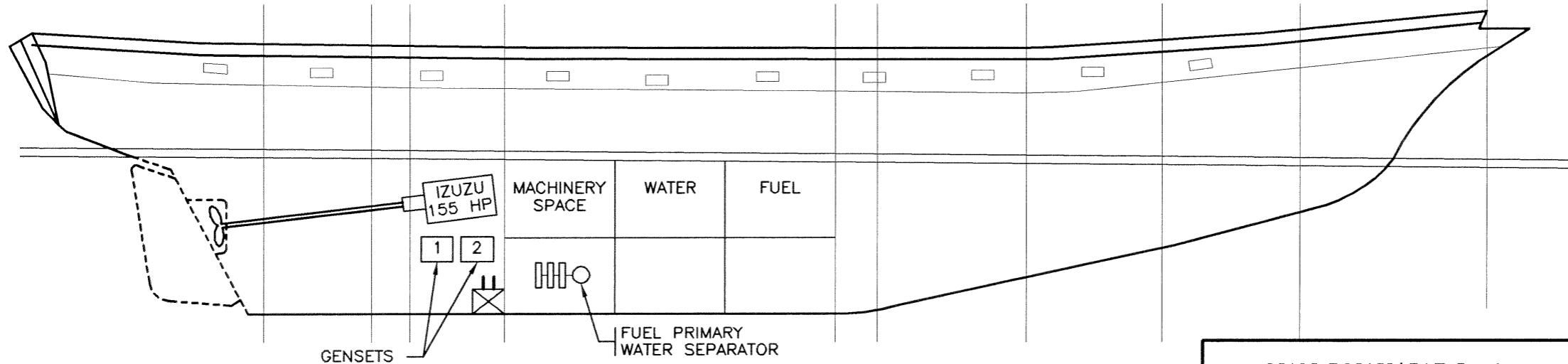
STARBOARD



**NOTES:**

FUEL SYSTEM

- a) FUEL TANKS DO NOT ABUT ENGINE ROOM.
- b) PIPING IN ENGINE ROOM IS COPPER.
- c) FUEL FILTERS NOT IN ENGINE ROOM.
- d) FUEL SHUTOFF FROM ACCOMMODATION AREA IS IN 'CABIN 4' LOCKER SPACE.
- e) FUEL PIPING TO TANKS IS SCHED. 40 BLK STEEL TO MACHINE SPACE AND TO ENGINE ROOM.
- f) MAIN ENGINE AND GENSETS ON SEPARATE FILTER AND ALL CAN BE USED TO RUN ANY OF THE THREE.



**PLAN VIEW**

NTS

NAN-C-NAV/CAD Services		(604) 584-9115	
<b>ENGINE ROOM LAYOUT</b>			
APR 2004		S.V. COPPER SKY	
O.N. 805624		FILE: COPSKY-10	